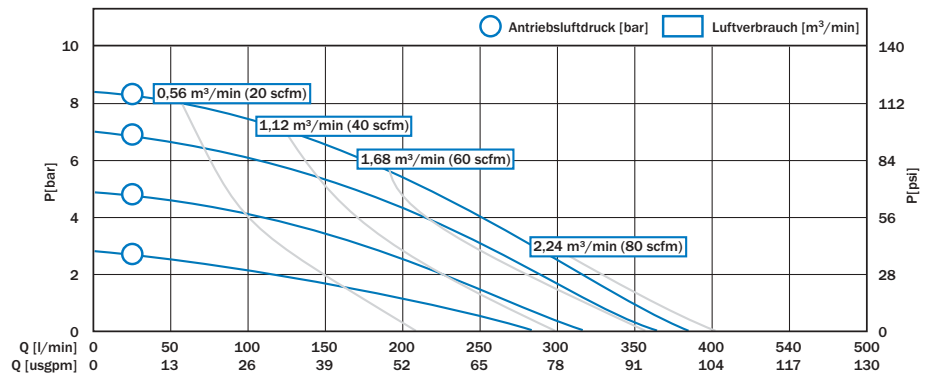


VERDERAIR VA 40 Metall

Type VA 40

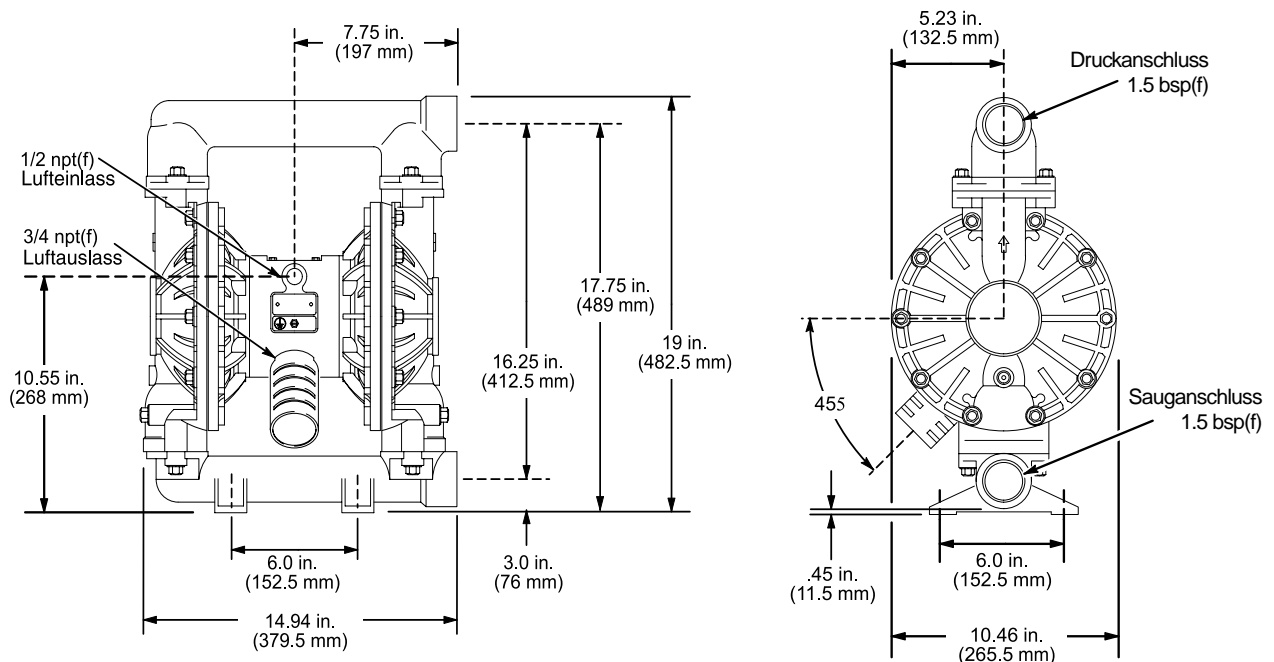


Technische Daten

Technische Daten		
Gewicht [kg]	Aluminum	15.2
	Edelstahl	38.6
Saughöhe [mWs]	trocken	2.5
	produktberührt	5.5
Temperatur [°C]	Aluminum	5-65*
	Edelstahl	5-65*
* 93°C mit Teflon Membrane		
Feststoffgröße [mm]		4.8
Nicht produktberührte Werkstoffe		
Mittelgehäuse	Epoxid beschichtet Aluminium	
Codierung		
VA 40 . [nr.2] . [nr.3] . [nr.4] . [nr.5]		
[nr.2] Membran Kammern	AL = Aluminum SS = Edelstahl	

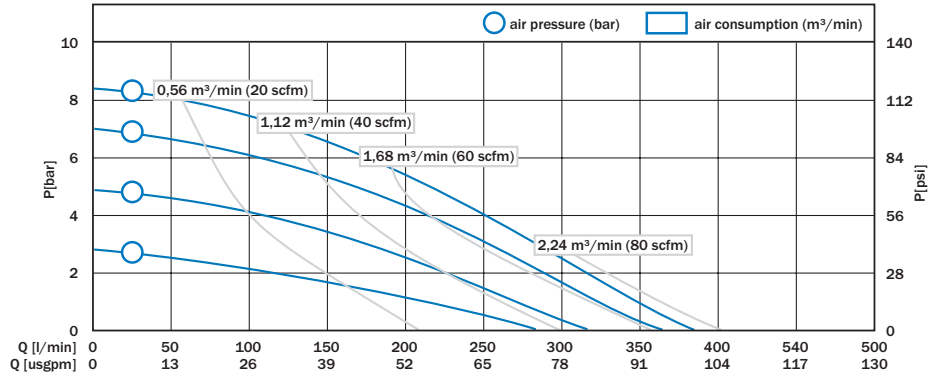
[nr.3] Ventilsitze	
PP	Polypropylen
KY	Kynar
SS	Edelstahl
HS	Gehärteter Stahl
HY	Hytrel
SP	Santoprene
GE	Geolast
VT	Viton
[nr.4] Ventile	
AC	Acetal
GE	Geolast
HS	Gehärteter Stahl
HY	Hytrel
SP	Santoprene
TF	Teflon
VT	Viton
[nr.5] Membranen	
TF	Teflon
HY	Hytrel
SP	Santoprene
VT	Viton
GE	Geolast

Abmessungen



VERDERAIR VA 40 metallic

Type VA 40



Technical details

Technical details		
Weight [kg]	Aluminum	15.2
	Stainless Steel	38.6
Suction lift [mwc]	Dry	2.5
	Wet	5.5
Temperature [°C]	Aluminum	5-65*
	Stainless Steel	5-65*
* 93 °C with Teflon diaphragms		
Max. particle size [mm]		4.8

Non wetted material	
Centre section	Epoxy coated Aluminum

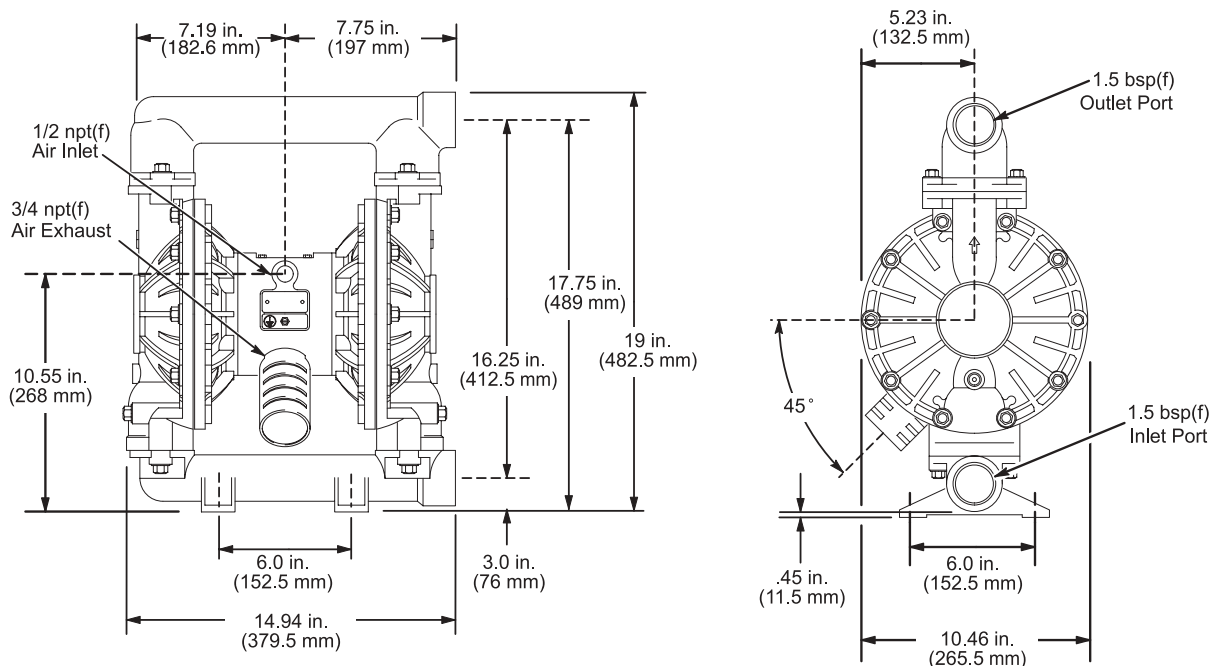
Article codes	
VA 40 . [no.2] . [no.3] . [no.4] . [no.5]	
[no.2] material of casing	
AL	= Aluminum
SS	= Stainless Steel

[no.3] material of seat	
PP	= Polypropylene
KY	= Kynar
SS	= Stainless Steel
HS	= Hardened Steel
HY	= Hytrel
SP	= Santoprene
GE	= Geolast
VT	= Viton

[no.4] material of valve	
AC	= Acetal
GE	= Geolast
HS	= Hardened Steel
HY	= Hytrel
SP	= Santoprene
TF	= Teflon
VT	= Viton

[no.5] material of diaphragm	
TF	= Teflon
HY	= Hytrel
SP	= Santoprene
VT	= Viton
GE	= Geolast

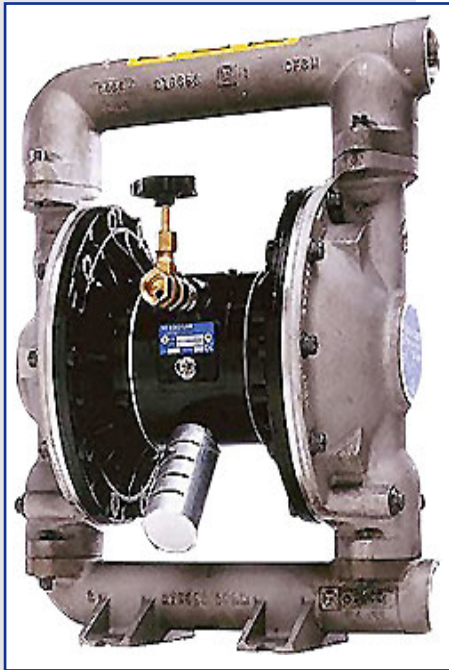
Dimensions



Diaphragm Pumps

Languages > 

Air Driven Diaphragm Pump - VA40

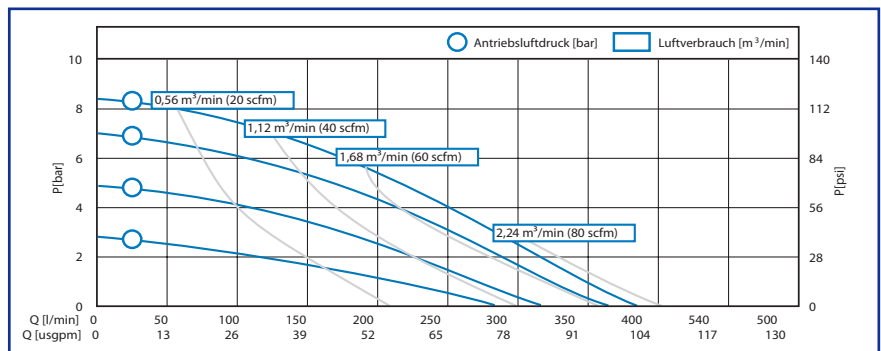


VA 25
Item-No.: 25133060000

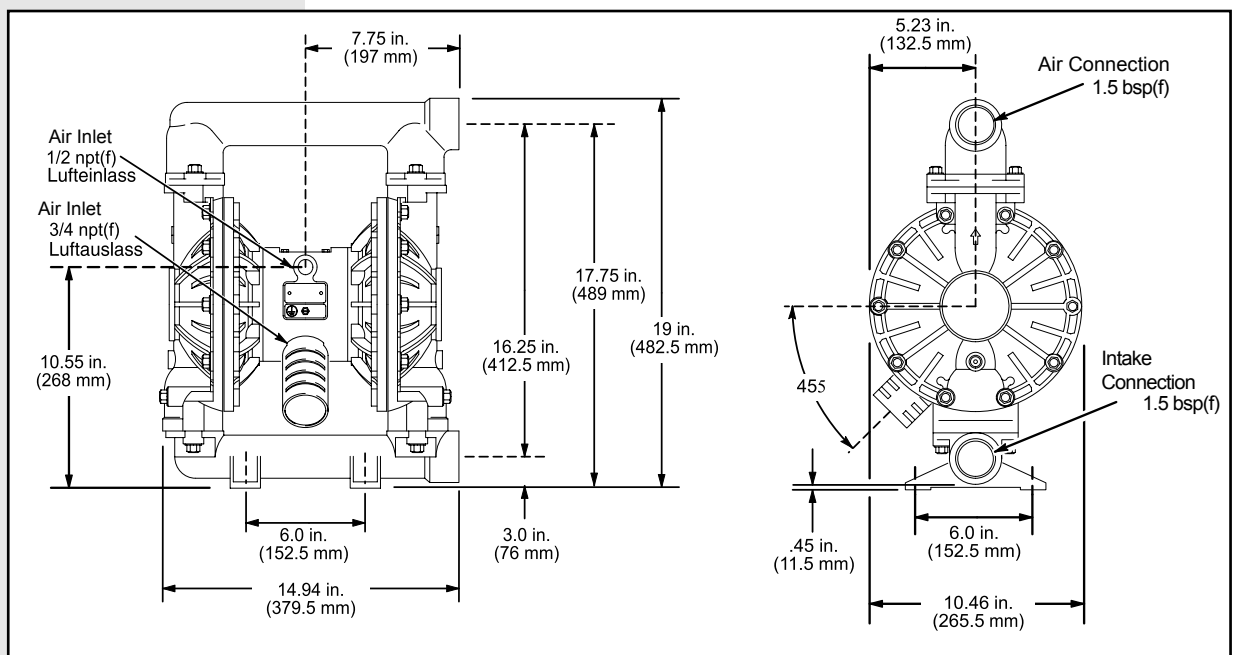
Technical Data

Weight	Aluminum	15,2 kg
	Stainless Steel	38,6 kg
Suction Height	Dry	2,5 mWs
	Wet	5,5 mWs
Temperatur	Aluminum	5-65 °C
	Stainless Steel	5- 65°C
	93 °C with Teflon Diaphragm	
Max. Particle Size [mm]		4,8
Non Wetted Material	Centre Section	Epoxy Coated Aluminium

Performance



Dimension



* Changes and mistakes excepted, prices plus packing and VAT.