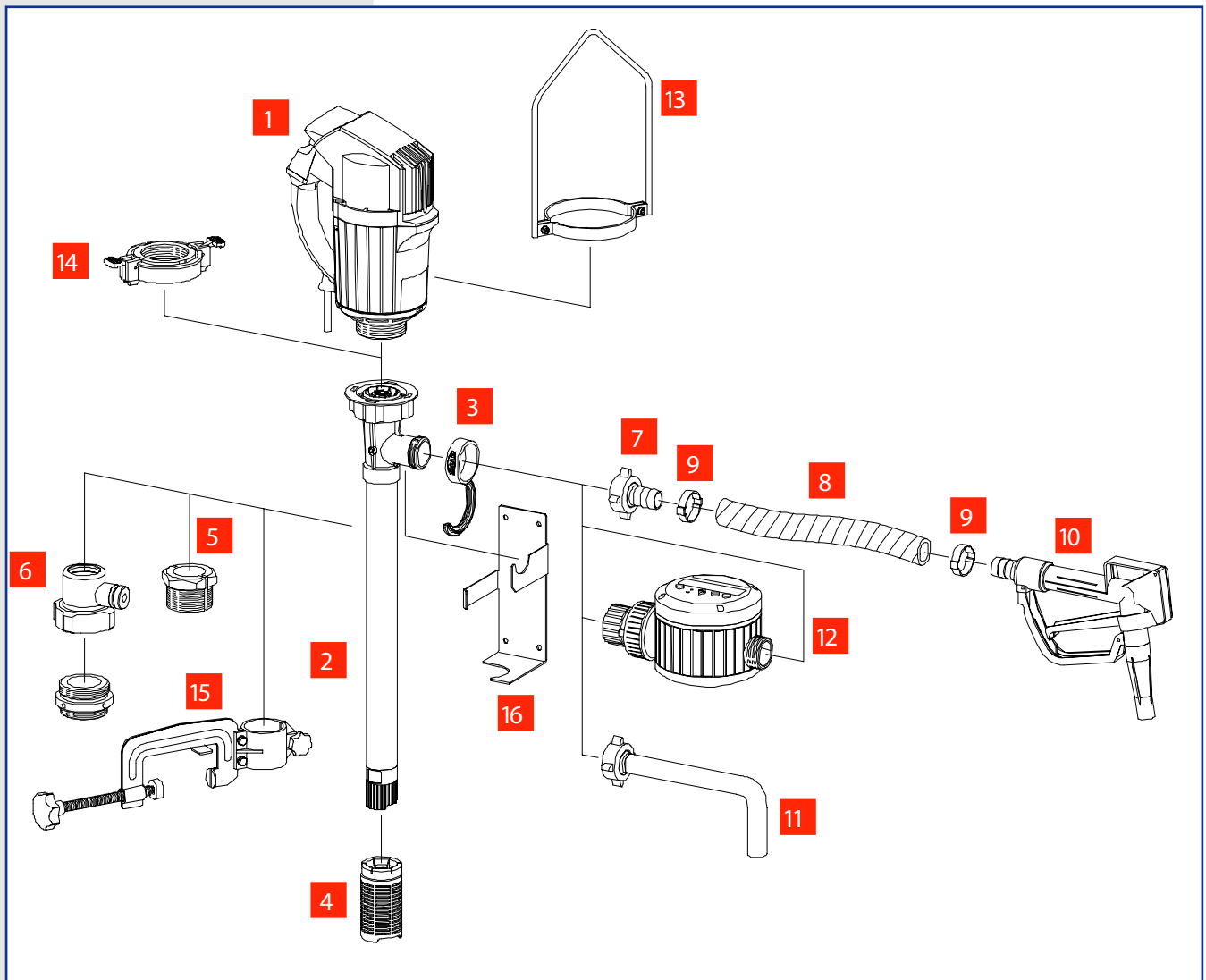


Fasspumpen / Barrel pumps

Languages >  

Übersicht FLUX Fasspumpe mit Zubehör



- | | | | |
|----|-----------------------------------|----|-------------------------------|
| 1 | Antriebsmotor | 1 | Drive motor |
| 2 | Fasspumpe | 2 | Barrel pump |
| 3 | FLUX-Clip | 3 | FLUX-Clip |
| 4 | Fußsieb | 4 | Suction strainer |
| 5 | Fassverschraubung | 5 | Compression gland |
| 6 | FES-Emissions-Schutzventil | 6 | Fume gland type FES |
| 7 | Schlauchanschluss | 7 | Hose connection |
| 8 | Schlauch | 8 | Flexible hose |
| 9 | Schlauchklemme | 9 | Hose clip |
| 10 | Zapfpistole | 10 | Quick action tap |
| 11 | Auslaufbogen | 11 | Discharge spout |
| 12 | Flüssigkeits-Mengenmesser FMC 100 | 12 | Liquid meter type FMC 100 |
| 13 | Haltebügel | 13 | Carrying handle |
| 14 | Schnellspannkupplung SSK 400 | 14 | Quick action coupling SSK 400 |
| 15 | Anklemmvorrichtung | 15 | Attachment clamp |
| 16 | Pumpenhalterung | 16 | Wall bracket |