

Band-It

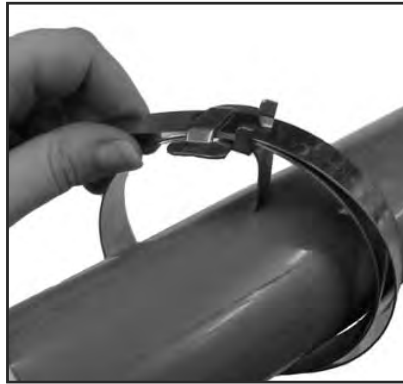
Languages > 

Heavy duty chuck tool

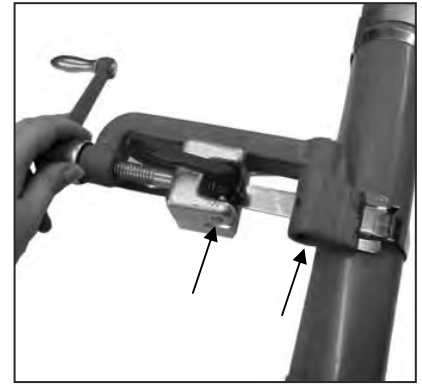
Operating instructions



1. Band may be used from bulk roll as this *completely eliminates waste of band*. Slide buckle on band as shown, bringing end of band around object to be clamped and again through buckle.



2. Continue band around object once more and again through buckle. *Double banding develops a great deal more radial compression than single banding*. Bend end of band under buckle.



3. Place band in open of tool nose and gripper block. Move into slot as far as possible, to avoid buckle sliding into tool nose. Apply tension by turning handle of tool.



4. Place finger on BAND-IT Band at buckle bridge while tensioning with tool handle. When you feel BAND-IT Band stop moving through buckle as you are turning handle, *maximum pressure is being exerted by the BAND-IT Band* around object being clamped. *Stop turning handle*.



5. *Roll tool over buckle, backing off with tension handle 1- 1½ turns throughout entire rolling operation*. Failure to back off tension with tension handle throughout entire course of roll-over may result in breaking of band. There is no loss of tension as band released is used up in the bend.



6. Pull cutting handle to cut the band. When applying Giant Band clamps, prior to cutting off clamp, release band gripper and push tool nose away from buckle approx. ¼".



7. Remove tool, holding stub of band down with thumb.



8. Hammer down buckle ears to complete BAND-IT clamp.

* Changes and mistakes excepted, prices plus packing and VAT.

Band-It

Languages > 

Heavy duty chuck tool

Cleaning and warranty

Gripper Cleaning Instructions:

1. Remove gripper. Align gripper pin hole with notch in tool frame. Using a punch and hammer, punch pin out of slide block.



2. Using a wire brush, clean all foreign matter from teeth.



3. Replace pin. Gripper spring must be seated in tension screw hole. Align gripper hole with slide block hole, insert pin in hole and hammer pin in place.



NOTE: Periodically apply food-grade white lubricant or equivalent to tension screw thread (Item 6 on page 3) to prevent excessive wear. If tool fails to securely grip tail of clamp, follow gripper cleaning instructions above.

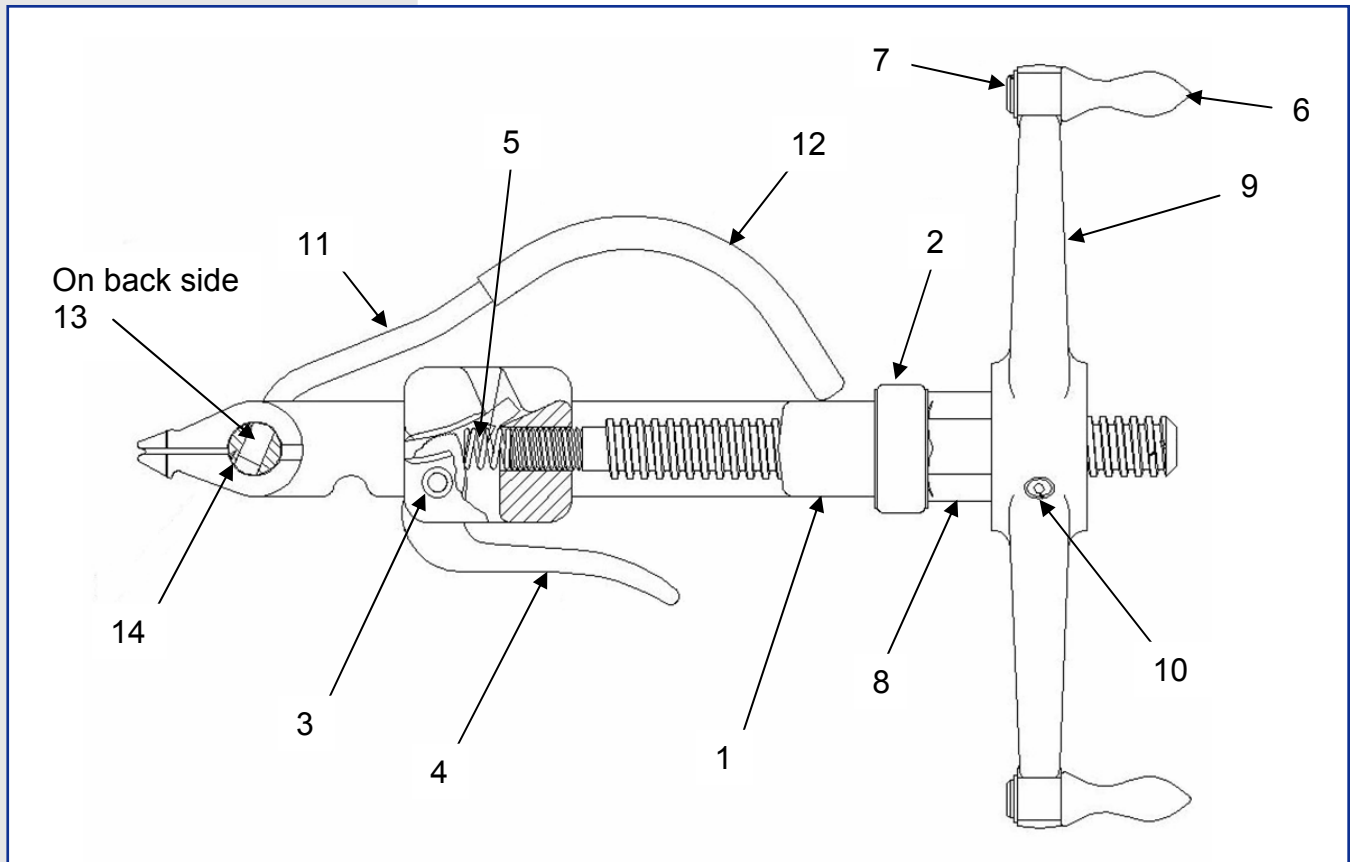
* Changes and mistakes excepted, prices plus packing and VAT.

Band-It

Languages > 

Heavy duty chuck tool

Tool assembly - Parts list



REPAIR PARTS LIST

| ITEM | DESCRIPTION | QTY |
|------|-------------------------|-----|
| 1 | TOOL FRAME | 1 |
| 2 | THRUST BEARING | 1 |
| 3 | PIN, ECC. LEVER PIVOT | 1 |
| 4 | BAND GRIPPER | 1 |
| 5 | GRIPPER SPRING | 1 |
| 6 | SPIN GRIP | 2 |
| 7 | EXTERNAL RETAINING RING | 2 |
| 8 | BUSHING, TENSION HANDLE | 1 |
| 9 | TENSION HANDLE | 1 |
| 10 | SET SCREW, HALF DOG | 1 |
| 11 | CUTTER BAR HANDLE | 1 |
| 12 | VINYL GRIP | 1 |
| 13 | SET SCREW | 1 |
| 14 | CUTTER BAR | 1 |

* Changes and mistakes excepted, prices plus packing and VAT.